



Australian Government

BUILDING OUR FUTURE



December 2022

Out of hours work on the Newell Highway south of Moree on the 16 December

The NSW and Australian Governments are jointly funding the \$261.17 million heavy duty pavement upgrade of the Newell Highway between Narrabri and Moree as part of the Newell Highway Upgrade program.

Lead contractor Fulton Hogan is continuing construction works across the four priority sections as part of Stage 1 of the Newell Highway heavy duty pavement upgrades between Narrabri and Moree.

As part of the construction program, a concrete base slab pour in Section 5 south of Moree is planned for **Friday 16 December**. Due to the increasing warm weather, Fulton Hogan will **commence the concrete pour at 3.30am** to avoid potential curing and quality issues. Work is expected to be **completed by 10.00am that morning**.

How will the work affect you?

The work is being carried out near the industrial area south of Moree along the Newell Highway, see map of the work area over the page.

The work will involve use of plant and machinery that may create noise and light. Noise monitors will be in place to ensure impacts are minimal. Fulton Hogan will ensure any lighting towers are oriented to minimise impacts on motorists using the Newell Highway and that any machinery is turned off when not in use.

Residents and businesses within the work area will be directly consulted about the planned work activities.

Traffic changes

The work will be carried out under existing traffic control conditions to keep the work zone safe, which includes reduced speed limits, shoulder closures and contra-flow arrangements.

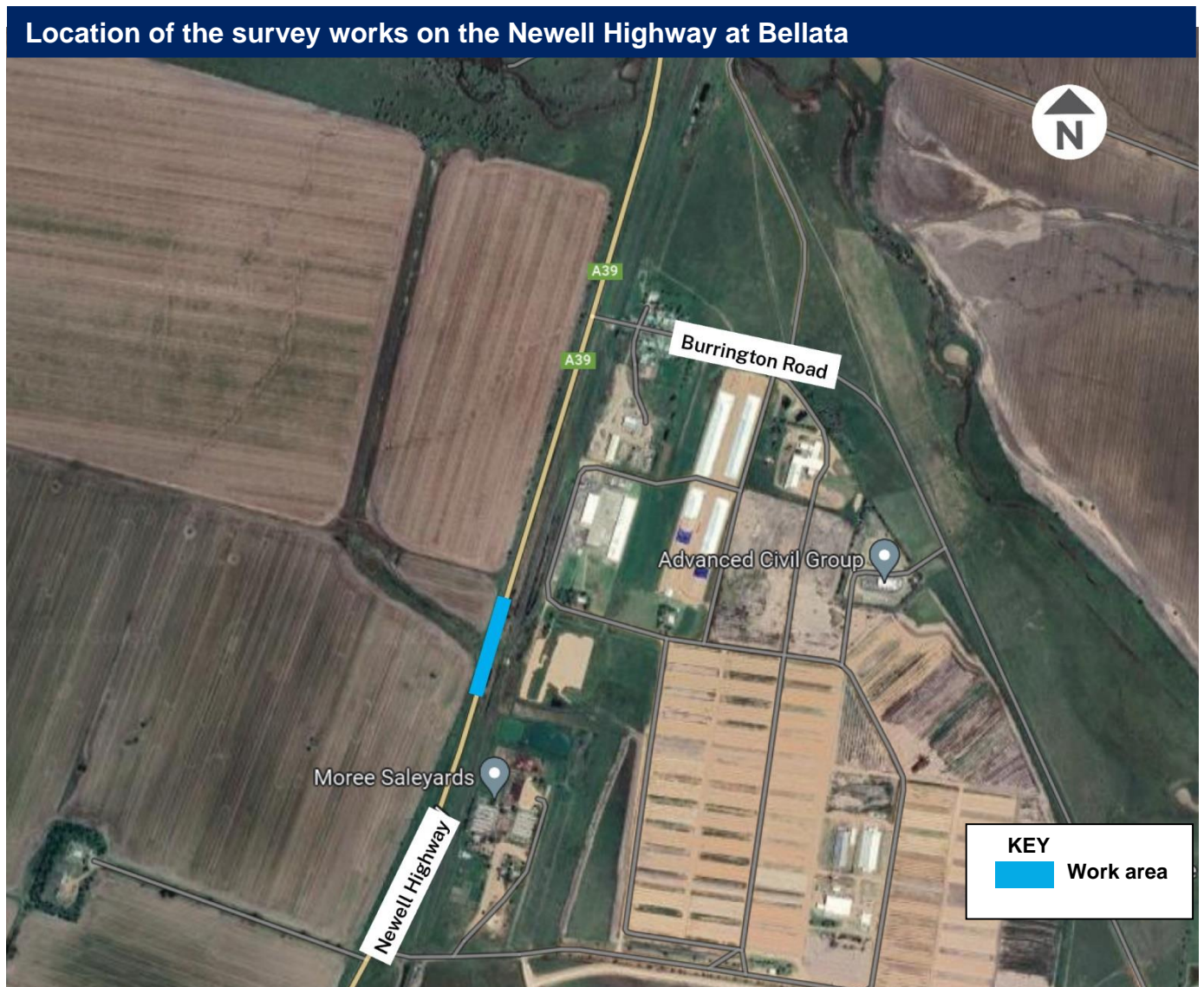
Please keep to speed limits and follow the direction of traffic controllers and signs. For the latest traffic updates, you can call 132 701, visit livetraffic.com or download the Live Traffic NSW App.

Contact

If you have any questions, please contact us on **1800 741 636** (option 3) or newell.upgrade@transport.nsw.gov.au

For more information on our projects, visit <https://nswroads.work/N2M>

Thank you for your patience during this important work.



If you need help understanding this information, please contact the Translating and Interpreting Service on 131 450 and ask them to call us on **1800 741 636**.