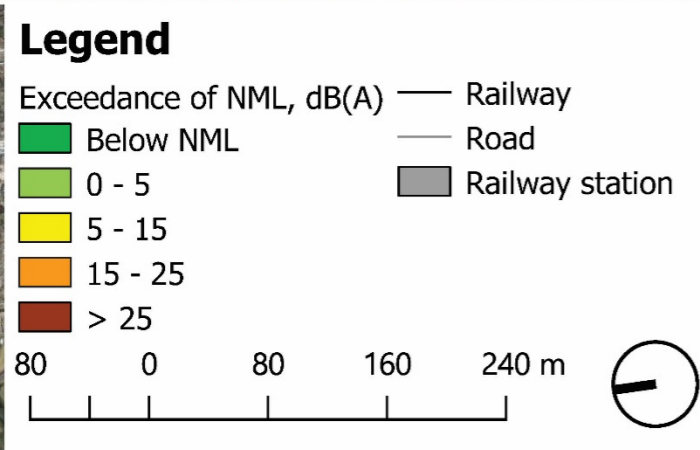


## APPENDIX D Predicted construction noise impacts

### **D.3 Out of hours work (evening)**



Construction scenario: Site preparation / demobilisation



Consultant:  
**RENZO TONIN & ASSOCIATES**  
*inspired to achieve*  
 1/418A Elizabeth Street, SURRY HILLS NSW 2010  
 P: 02 8218 0500 F: 02 8218 0501

Client:  
 Jacobs Group  
 (Australia) Pty Ltd

Project:  
 More Trains More Services  
 Package B PAC  
 B2 Wollongong

Description:  
 Construction noise results - Wollongong  
 Out of hours works, period 1 (evening)

For information only and not for construction.  
 This information is protected by copyright.

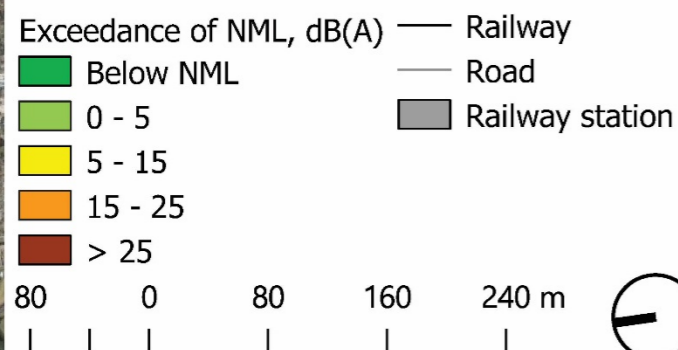
Figure No: TK877-01-B2-1(r2) Rev: R1  
 Date: 06.08.2019 Sheet: A3  
 Created by: AMo Scale: 1:5000



Construction scenario: Civil - walkways, lighting and CCTV/fences



**Legend**



Consultant:



1/418A Elizabeth Street, SURRY HILLS NSW 2010  
P: 02 8218 0500 F: 02 8218 0501

Client:

Jacobs Group  
(Australia) Pty Ltd

Project:

More Trains More Services  
Package B PAC  
B2 Wollongong

For information only and not for construction.  
This information is protected by copyright.

Description:

Construction noise results - Wollongong  
Out of hours works, period 1 (evening)

Figure No: TK877-01-B2-2(r2)  
Date: 06.08.2019  
Created by: AMo

Rev: R1  
Sheet: A3  
Scale: 1:5000

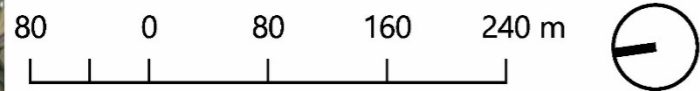


Construction scenario: Electrical



### Legend

- |                          |                   |
|--------------------------|-------------------|
| Exceedance of NML, dB(A) | — Railway         |
| Below NML                | — Road            |
| 0 - 5                    | ■ Railway station |
| 5 - 15                   |                   |
| 15 - 25                  |                   |



Consultant:



1/418A Elizabeth Street, SURRY HILLS NSW 2010  
P: 02 8218 0500 F: 02 8218 0501

Client:

Jacobs Group  
(Australia) Pty Ltd

Project:

More Trains More Services  
Package B PAC  
B2 Wollongong

For information only and not for construction.  
This information is protected by copyright.

Description:

Construction noise results - Wollongong  
Out of hours works, period 1 (evening)

Figure No: TK877-01-B2-3(r2)  
Date: 06.08.2019  
Created by: AMo

Rev: R1  
Sheet: A3  
Scale: 1:5000

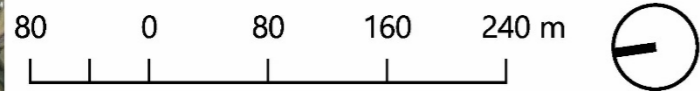


Construction scenario: Signals and communications



**Legend**

- Exceedance of NML, dB(A)
- Below NML
- 0 - 5
- 5 - 15
- Railway
- Road
- Railway station



Consultant:



1/418A Elizabeth Street, SURRY HILLS NSW 2010  
P: 02 8218 0500 F: 02 8218 0501

Client:

Jacobs Group  
(Australia) Pty Ltd

Project:

More Trains More Services  
Package B PAC  
B2 Wollongong

For information only and not for construction.  
This information is protected by copyright.

Description:

Construction noise results - Wollongong  
Out of hours works, period 1 (evening)

Figure No: TK877-01-B2-4(r2)  
Date: 06.08.2019  
Created by: AMo

Rev: R1  
Sheet: A3  
Scale: 1:5000

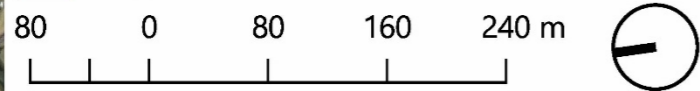


Construction scenario: Track work



**Legend**

- Exceedance of NML, dB(A)
- Below NML
- 0 - 5
- 5 - 15
- 15 - 25
- > 25
- Railway
- Road
- Railway station



Consultant:



1/418A Elizabeth Street, SURRY HILLS NSW 2010  
P: 02 8218 0500 F: 02 8218 0501

Client:

Jacobs Group  
(Australia) Pty Ltd

Project:

More Trains More Services  
Package B PAC  
B2 Wollongong

For information only and not for construction.  
This information is protected by copyright.

Description:

Construction noise results - Wollongong  
Out of hours works, period 1 (evening)

Figure No: TK877-01-B2-5(r2)  
Date: 06.08.2019  
Created by: AMo

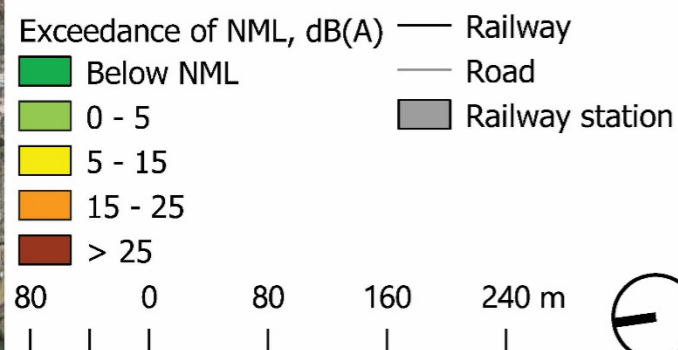
Rev: R1  
Sheet: A3  
Scale: 1:5000



Construction scenario: Civil - amenities building and car park



**Legend**



Consultant:



1/418A Elizabeth Street, SURRY HILLS NSW 2010  
P: 02 8218 0500 F: 02 8218 0501

Client:

Jacobs Group  
(Australia) Pty Ltd

Project:

More Trains More Services  
Package B PAC  
B2 Wollongong

For information only and not for construction.  
This information is protected by copyright.

Description:

Construction noise results - Wollongong  
Out of hours works, period 1 (evening)

Figure No: TK877-01-B2-6(r2)  
Date: 06.08.2019  
Created by: AMo

Rev: R1  
Sheet: A3  
Scale: 1:5000



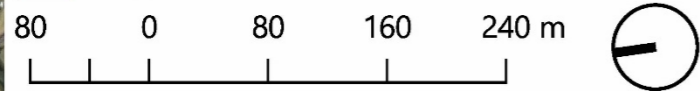


Construction scenario: Turnouts



### Legend

- |                          |                   |
|--------------------------|-------------------|
| Exceedance of NML, dB(A) | — Railway         |
| Below NML                | — Road            |
| 0 - 5                    | ■ Railway station |
| 5 - 15                   |                   |
| 15 - 25                  |                   |
| > 25                     |                   |



Consultant:



1/418A Elizabeth Street, SURRY HILLS NSW 2010  
P: 02 8218 0500 F: 02 8218 0501

Client:

Jacobs Group  
(Australia) Pty Ltd

Project:

More Trains More Services  
Package B PAC  
B2 Wollongong

For information only and not for construction.  
This information is protected by copyright.

Description:

Construction noise results - Wollongong  
Out of hours works, period 1 (evening)

Figure No: TK877-01-B2-7(r2)  
Date: 06.08.2019  
Created by: AMo

Rev: R1  
Sheet: A3  
Scale: 1:5000

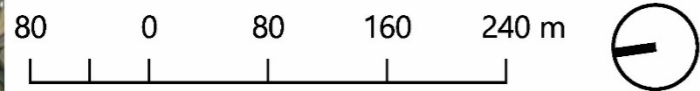


Construction scenario: Civil - platform extensions



### Legend

- |                          |                       |
|--------------------------|-----------------------|
| Exceedance of NML, dB(A) | — Railway             |
| Dark Green: Below NML    | — Road                |
| Light Green: 0 - 5       | Grey: Railway station |
| Yellow: 5 - 15           |                       |
| Orange: 15 - 25          |                       |



Consultant:



1/418A Elizabeth Street, SURRY HILLS NSW 2010  
P: 02 8218 0500 F: 02 8218 0501

Client:

Jacobs Group  
(Australia) Pty Ltd

Project:

More Trains More Services  
Package B PAC  
B2 Wollongong

For information only and not for construction.  
This information is protected by copyright.

Description:

Construction noise results - Wollongong  
Out of hours works, period 1 (evening)

Figure No: TK877-01-B2-8(r2)  
Date: 06.08.2019  
Created by: AMo

Rev: R1  
Sheet: A3  
Scale: 1:5000

## D.4 Out of hours work (night)

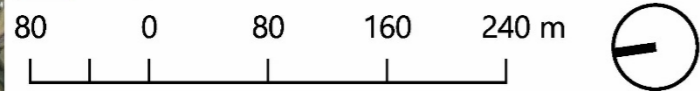


Construction scenario: Site preparation / demobilisation



**Legend**

- Exceedance of NML, dB(A)
- Below NML
- 0 - 5
- 5 - 15
- 15 - 25
- > 25
- Railway
- Road
- Railway station



Consultant:



1/418A Elizabeth Street, SURRY HILLS NSW 2010  
P: 02 8218 0500 F: 02 8218 0501

Client:

Jacobs Group  
(Australia) Pty Ltd

Project:

More Trains More Services  
Package B PAC  
B2 Wollongong

For information only and not for construction.  
This information is protected by copyright.

Description:

Construction noise results - Wollongong  
Out of hours works, period 2

Figure No: TK877-01-B2-1(r0)  
Date: 17.07.2019  
Created by: AMo  
Rev: R0  
Sheet: A3  
Scale: 1:5000

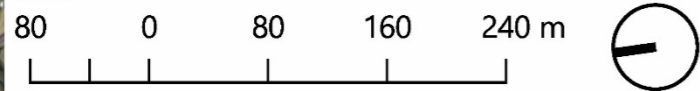


Construction scenario: Civil - walkways, lighting and CCTV/fences



**Legend**

- Exceedance of NML, dB(A)
- Below NML
- 0 - 5
- 5 - 15
- 15 - 25
- > 25
- Railway
- Road
- Railway station



Consultant:



1/418A Elizabeth Street, SURRY HILLS NSW 2010  
P: 02 8218 0500 F: 02 8218 0501

Client:

Jacobs Group  
(Australia) Pty Ltd

Project:

More Trains More Services  
Package B PAC  
B2 Wollongong

Description:

Construction noise results - Wollongong  
Out of hours works, period 2

For information only and not for construction.  
This information is protected by copyright.

Figure No: TK877-01-B2-2(r0)  
Date: 17.07.2019  
Created by: AMo

Rev: R0  
Sheet: A3  
Scale: 1:5000

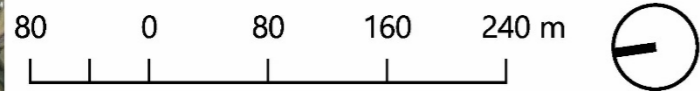


Construction scenario: Electrical



### Legend

- |                          |                   |
|--------------------------|-------------------|
| Exceedance of NML, dB(A) | — Railway         |
| Below NML                | — Road            |
| 0 - 5                    | ■ Railway station |
| 5 - 15                   |                   |
| 15 - 25                  |                   |



Consultant:



1/418A Elizabeth Street, SURRY HILLS NSW 2010  
P: 02 8218 0500 F: 02 8218 0501

Client:

Jacobs Group  
(Australia) Pty Ltd

Project:

More Trains More Services  
Package B PAC  
B2 Wollongong

For information only and not for construction.  
This information is protected by copyright.

Description:

Construction noise results - Wollongong  
Out of hours works, period 2

Figure No: TK877-01-B2-3(r0)  
Date: 17.07.2019  
Created by: AMo

Rev: R0  
Sheet: A3  
Scale: 1:5000

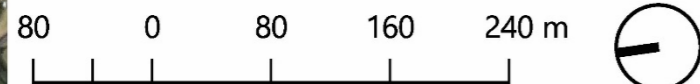


Construction scenario: Signals and communications



**Legend**

- Exceedance of NML, dB(A)
- Below NML
- 0 - 5
- 5 - 15
- Railway
- Road
- Railway station



Consultant:



1/418A Elizabeth Street, SURRY HILLS NSW 2010  
P: 02 8218 0500 F: 02 8218 0501

Client:

Jacobs Group  
(Australia) Pty Ltd

Project:

More Trains More Services  
Package B PAC  
B2 Wollongong

For information only and not for construction.  
This information is protected by copyright.

Description:

Construction noise results - Wollongong  
Out of hours works, period 2

Figure No: TK877-01-B2-4(r0)  
Date: 17.07.2019  
Created by: AMo

Rev: R0  
Sheet: A3  
Scale: 1:5000

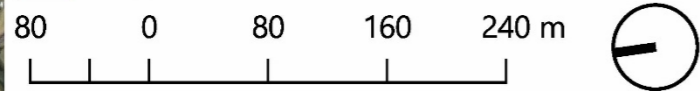


Construction scenario: Track work



**Legend**

- Exceedance of NML, dB(A)
- Below NML
- 0 - 5
- 5 - 15
- 15 - 25
- > 25
- Railway
- Road
- Railway station



Consultant:



1/418A Elizabeth Street, SURRY HILLS NSW 2010  
P: 02 8218 0500 F: 02 8218 0501

Client:

Jacobs Group  
(Australia) Pty Ltd

Project:

More Trains More Services  
Package B PAC  
B2 Wollongong

For information only and not for construction.  
This information is protected by copyright.

Description:

Construction noise results - Wollongong  
Out of hours works, period 2

Figure No: TK877-01-B2-5(r0)  
Date: 17.07.2019  
Created by: AMo

Rev: R0  
Sheet: A3  
Scale: 1:5000



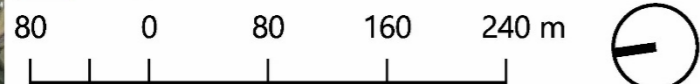


Construction scenario: Civil - amenities building and car park



### Legend

- |                          |                   |
|--------------------------|-------------------|
| Exceedance of NML, dB(A) | — Railway         |
| Below NML                | — Road            |
| 0 - 5                    | — Railway station |
| 5 - 15                   |                   |
| 15 - 25                  |                   |
| > 25                     |                   |



Consultant:



1/418A Elizabeth Street, SURRY HILLS NSW 2010  
P: 02 8218 0500 F: 02 8218 0501

Client:

Jacobs Group  
(Australia) Pty Ltd

Project:

More Trains More Services  
Package B PAC  
B2 Wollongong

For information only and not for construction.  
This information is protected by copyright.

Description:

Construction noise results - Wollongong  
Out of hours works, period 2

Figure No: TK877-01-B2-6(r0)  
Date: 17.07.2019  
Created by: AMo

Rev: R0  
Sheet: A3  
Scale: 1:5000

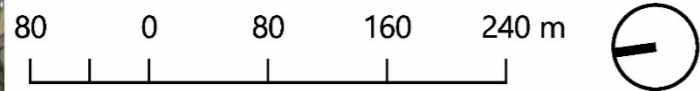


Construction scenario: Turnouts



**Legend**

- Exceedance of NML, dB(A)
- Below NML
- 0 - 5
- 5 - 15
- 15 - 25
- > 25
- Railway
- Road
- Railway station



Consultant:



1/418A Elizabeth Street, SURRY HILLS NSW 2010  
P: 02 8218 0500 F: 02 8218 0501

Client:

Jacobs Group  
(Australia) Pty Ltd

Project:

More Trains More Services  
Package B PAC  
B2 Wollongong

For information only and not for construction.  
This information is protected by copyright.

Description:

Construction noise results - Wollongong  
Out of hours works, period 2

Figure No: TK877-01-B2-7(r0)  
Date: 17.07.2019  
Created by: AMo

Rev: R0  
Sheet: A3  
Scale: 1:5000

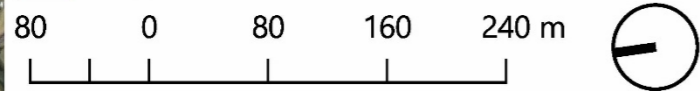


Construction scenario: Civil - platform extensions



**Legend**

- Exceedance of NML, dB(A)
- Below NML
- 0 - 5
- 5 - 15
- 15 - 25
- > 25
- Railway
- Road
- Railway station



Consultant:



1/418A Elizabeth Street, SURRY HILLS NSW 2010  
P: 02 8218 0500 F: 02 8218 0501

Client:

Jacobs Group  
(Australia) Pty Ltd

Project:

More Trains More Services  
Package B PAC  
B2 Wollongong

For information only and not for construction.  
This information is protected by copyright.

Description:

Construction noise results - Wollongong  
Out of hours works, period 2

Figure No: TK877-01-B2-8(r0)  
Date: 17.07.2019  
Created by: AMo

Rev: R0  
Sheet: A3  
Scale: 1:5000