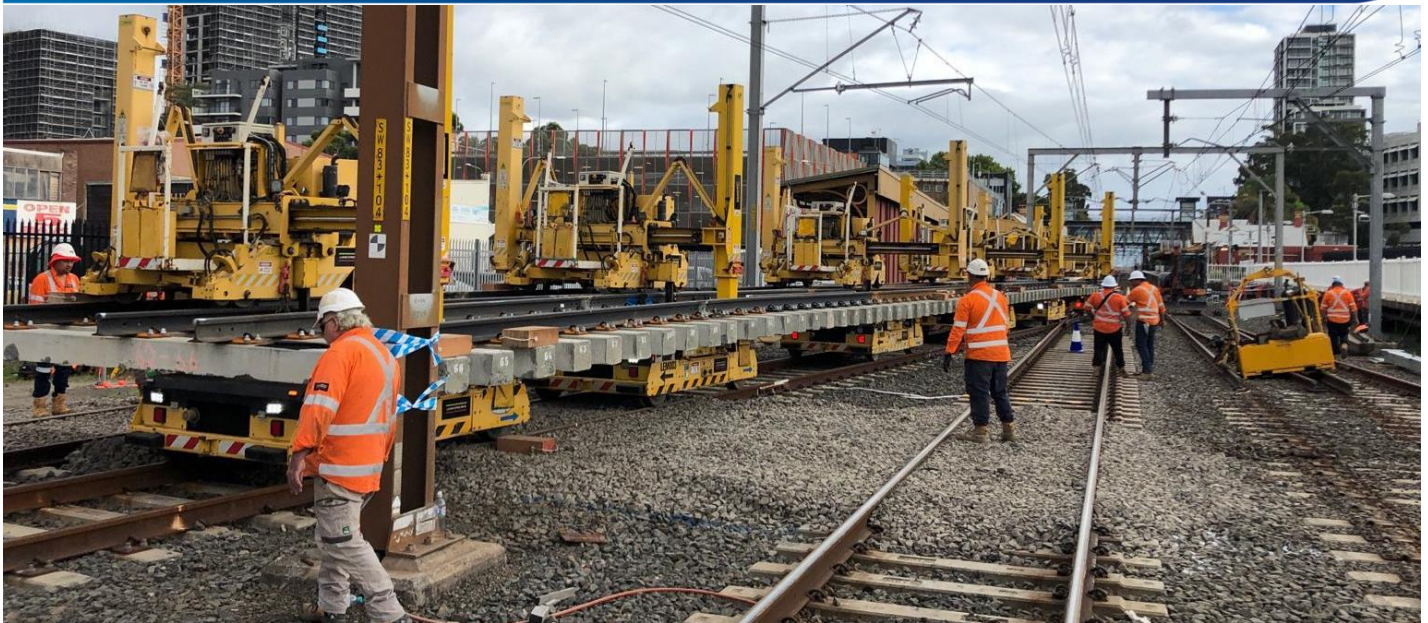


More Trains, More Services

Wollongong Stabling Yard and Platform Extension Project



Working in the rail corridor at Wollongong – December 2020

What's the latest news?

Over the last couple of months, we have continued working on the relocation and commissioning of an existing rail turnout and associated signalling and overhead wiring structures to raise the capacity of the rail system.

During January, activities also included:

- site establishment
- signalling work and installation of underground piping
- rail delivery and preconstruction of additional turnouts
- locating underground services
- waste removal

What's coming next?

This month, we will be preparing Wollongong Station for some major construction activities which will take place over two weekends.

Activities will include the use of a crane to enable overhead wiring structure installation, a concrete truck and frequent construction vehicle movements delivering material to and from site.

This month, you will see us

- digging pile holes for overhead wire structure concrete footings
- pouring concrete footings structures
- prebuilding overhead structures within the commuter carpark for craneage into the corridor
- isolating high voltage power
- modifying signalling infrastructure
- relocating turnouts

What you need to know about construction hours

To minimise disruption to commuter services and improve the safety of the construction team, we will be undertaking some activities outside of standard construction hours this month, while passenger trains are not running.

The works will take place between:

- **6am Saturday 6 and 8am Sunday 7 February**
- **6pm Friday 19 and 6am Monday 22 February**

For up to date information about services during these times please visit transportnsw.info or call 131 500.

Changes to parking

To enable construction activities to be undertaken safely, this month we will require use of car spaces in the southern commuter car park for one week between **Monday 15 and Monday 22 February**.

From **6am Monday 15 February** we will require the use of 19 car spaces from the commuter car park to the south of the station, as indicated in the *image 1* to the right.

From **6pm Thursday 18 until 6am Monday 22 February**, we will require use of the entire southern commuter car park, to enable safe movement of a rough terrain crane, as indicated in the *image 2* to the right.

Alternate parking will remain available in both the multi-storey car park to the west of the station and the commuter car park to the east of the station.

Minimising impacts

The project team understands that construction activities may cause disruption for the community and every effort will be made to minimise impacts where possible and ensure compliance with strict environmental conditions relating to noise, vibration and dust management.

This year we will be completing significant construction activities at Wollongong and would like to thank you for your patience as we work to improve services on the network.

Image 1



Image 2



Traffic control will reserve these spaces and signage will be installed in advance to advise motorists about these temporary changes.

Contact us

For more information or to subscribe for project updates:

 **project information line: 1800 684 490**

 **24/7 construction response line: 1800 775 465**

 **projects@transport.nsw.gov.au**

 **www.transport.nsw.gov.au/mtms**

Translation



If you require the services of an interpreter, please contact the Translating and Interpreting Service on **131 450** and ask them to contact Transport for NSW on **(02) 9200 0200**.

An interpreter will assist you with translation.